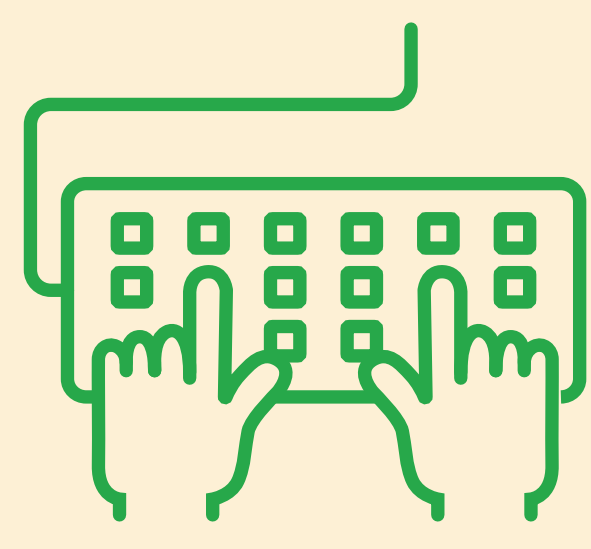


# Excel vs. Astrella

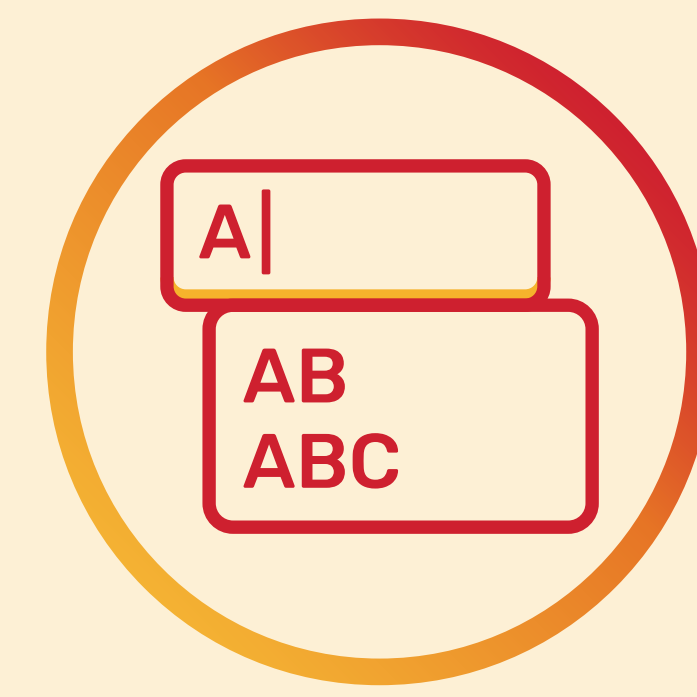
## Level up your cap table management

You're a successful CEO. Sales are up. The talent pool is deep. The sky's the limit. Why waste your time managing your cap table in Excel?

For modern equity management, it's time to ditch Excel for a modern, cloud-based solution—Astrella.



**Manual data entry:**  
Long hours typing numbers into a table



**Automated table management:**  
Enter a few fields and rely on the system to populate your cap table



**Robust data entry with powerful calculation tools—for a price**



**Calculations:**  
Powerful computation—once you know hundreds of esoteric commands



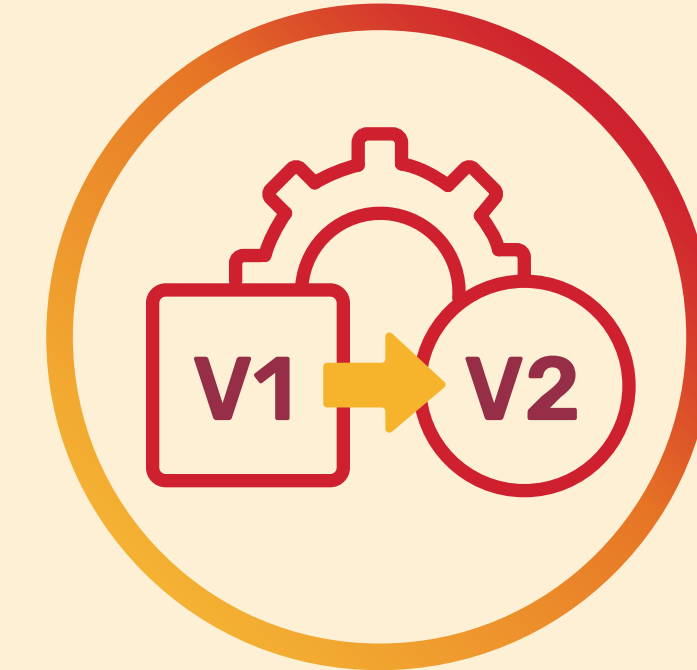
**Advanced mathematics tools:**  
Plug into advanced equations without having to memorize them



**Cloud-based cap table management for enterprise users**



**No versioning:**  
Lost files, lost changes, and lost time managing dozens of spreadsheets



**Automated file versioning:**  
Unify documents and contracts with a cloud-based system on an immutable blockchain ledger for equity tracking and audit trails

### Astellra: expert equity management

Excel is great at many things. But strategic decision-making should never take a back seat to poring over spreadsheets, worrying about the accuracy and integrity of financial data.

Fuel your journey through enterprise finance, from startup to exit, with unified, cloud-based, AI-driven equity management from Astrella.



**Streamline equity management:**

Cloud-based cap tables maintain consistency, integrity, and access for your entire team



**Drive automation with AI:**

Minimize manual, error-prone data entry with AI-driven automation for everyday tasks and processes



**Leverage predictive analytics:**

Intelligent data visualization provides an engaging and actionable way to digest information beyond simple graphs in a spreadsheet



**Work with industry-leading expertise:**

White-glove service from financial experts ensures that you're in complete control of your cap table and financial decision-making

According to a survey of over 150 businesses:

86%

86% said that they use Excel for cap table management in some capacity

63%

63% reported plans to move away from Excel

49%

49% plan to move from Excel within the next six months